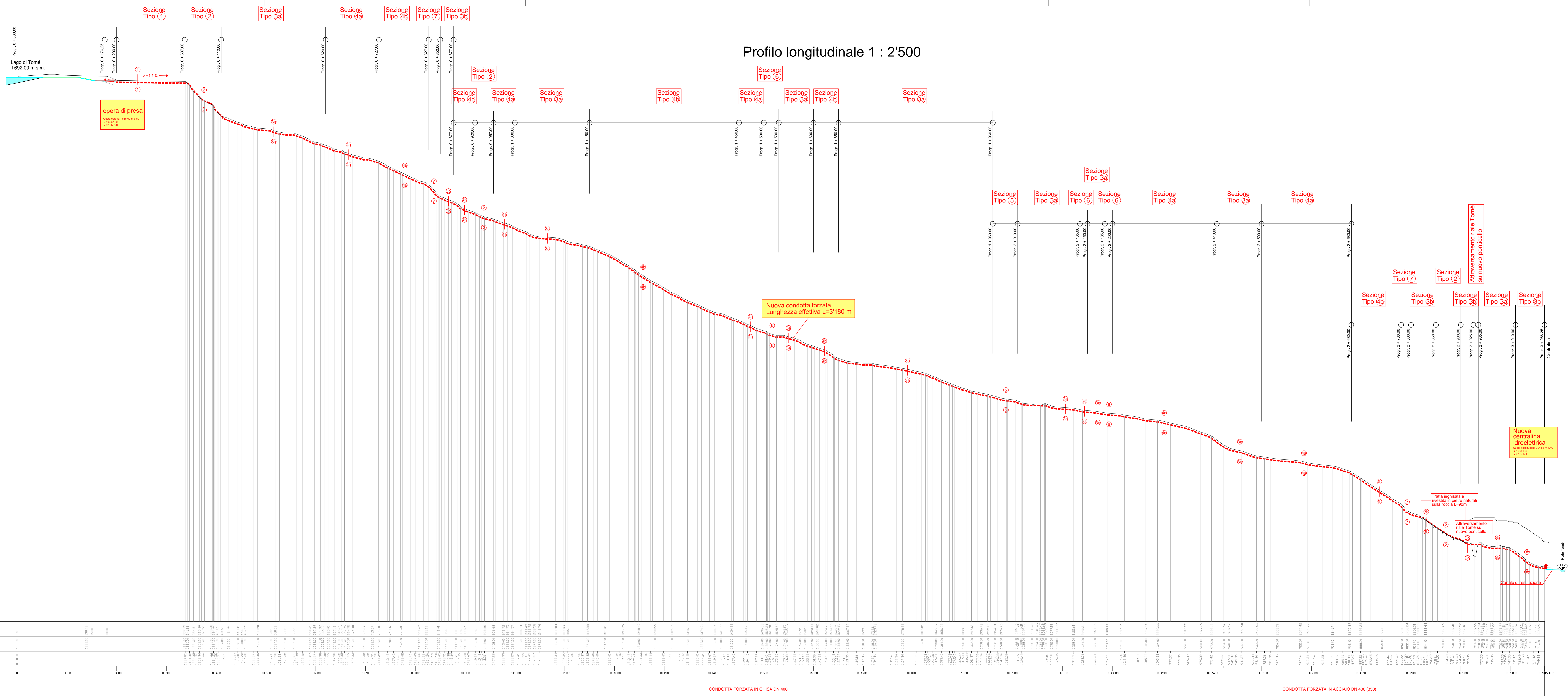


IM	IM MAGGIA ENGINEERING SA INGEGNERI CONSULENTI VIA S. FRANCINI 5 - CH 66011 LOCARNO 1 TEL. +39 091 756 68 11	No. IM 11.1785.41-002			
		Data	Dis.	Prog.	Viso
		Ott 2014	Zgr	Bu	60/147

Data	Dis.	Prog.	Viso	Descrizione modifiche



QUOTA 600.00 msm

PROGRESSIVE	TERRENO ESISTENTE	QUOTA PROGETTO
0+000.00	166.00	166.00
0+100.00	166.00	166.00
0+200.00	166.00	166.00
0+300.00	166.00	166.00
0+400.00	166.00	166.00
0+500.00	166.00	166.00
0+600.00	166.00	166.00
0+700.00	166.00	166.00
0+800.00	166.00	166.00
0+900.00	166.00	166.00
0+1000.00	166.00	166.00
0+1100.00	166.00	166.00
0+1200.00	166.00	166.00
0+1300.00	166.00	166.00
0+1400.00	166.00	166.00
0+1500.00	166.00	166.00
0+1600.00	166.00	166.00
0+1700.00	166.00	166.00
0+1800.00	166.00	166.00
0+1900.00	166.00	166.00
0+2000.00	166.00	166.00
0+2100.00	166.00	166.00
0+2200.00	166.00	166.00
0+2300.00	166.00	166.00
0+2400.00	166.00	166.00
0+2500.00	166.00	166.00
0+2600.00	166.00	166.00
0+2700.00	166.00	166.00
0+2800.00	166.00	166.00
0+2900.00	166.00	166.00
0+3000.00	166.00	166.00
0+368.25	166.00	166.00

CONDOTTA FORZATA IN GHISA DN 400

CONDOTTA FORZATA IN ACCIAIO DN 400 (350)